



University of Colorado  
Anschutz Medical Campus

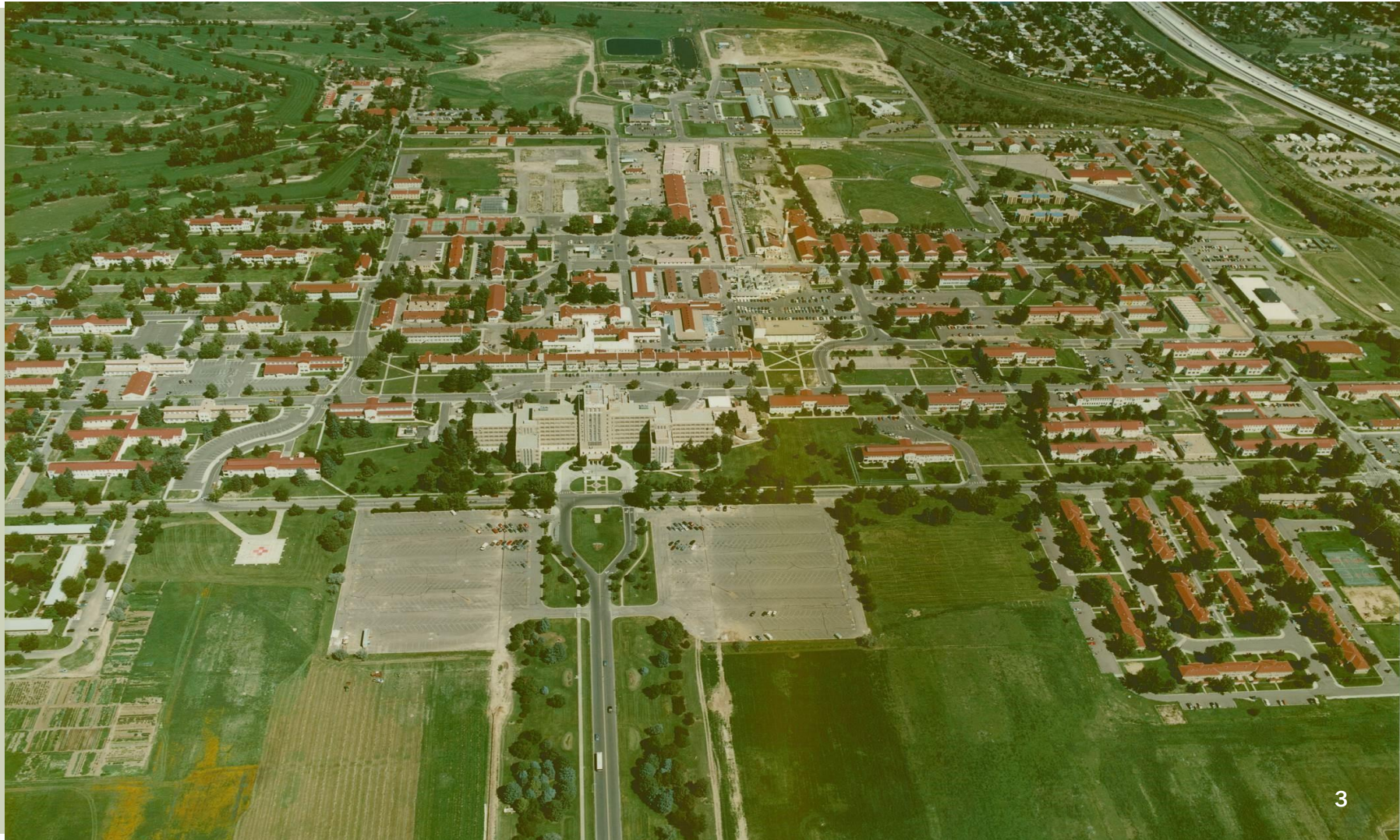
# PARKING STRATEGIES

Maximizing  
Efficiency and  
Current Resources

# INTRODUCTION

- At the University of Colorado Anschutz Medical Campus parking and transportation operations reside within Facilities Management. Parking is specifically responsible for the construction, maintenance, and administration of the university's parking facilities.
- Development of alternative transportation routes to connect students, faculty, staff, visitors and patients throughout our community.
- Recognizing campus growth and the impact on parking and transportation needs for the campus.
- Taking a creative approach to maximize the use of existing space at a minimal cost.

# FITZSIMONS MEDICAL CENTER PRIOR TO 2000





# ANSCHUTZ MEDICAL CAMPUS 2016





# CAMPUS EVENTS

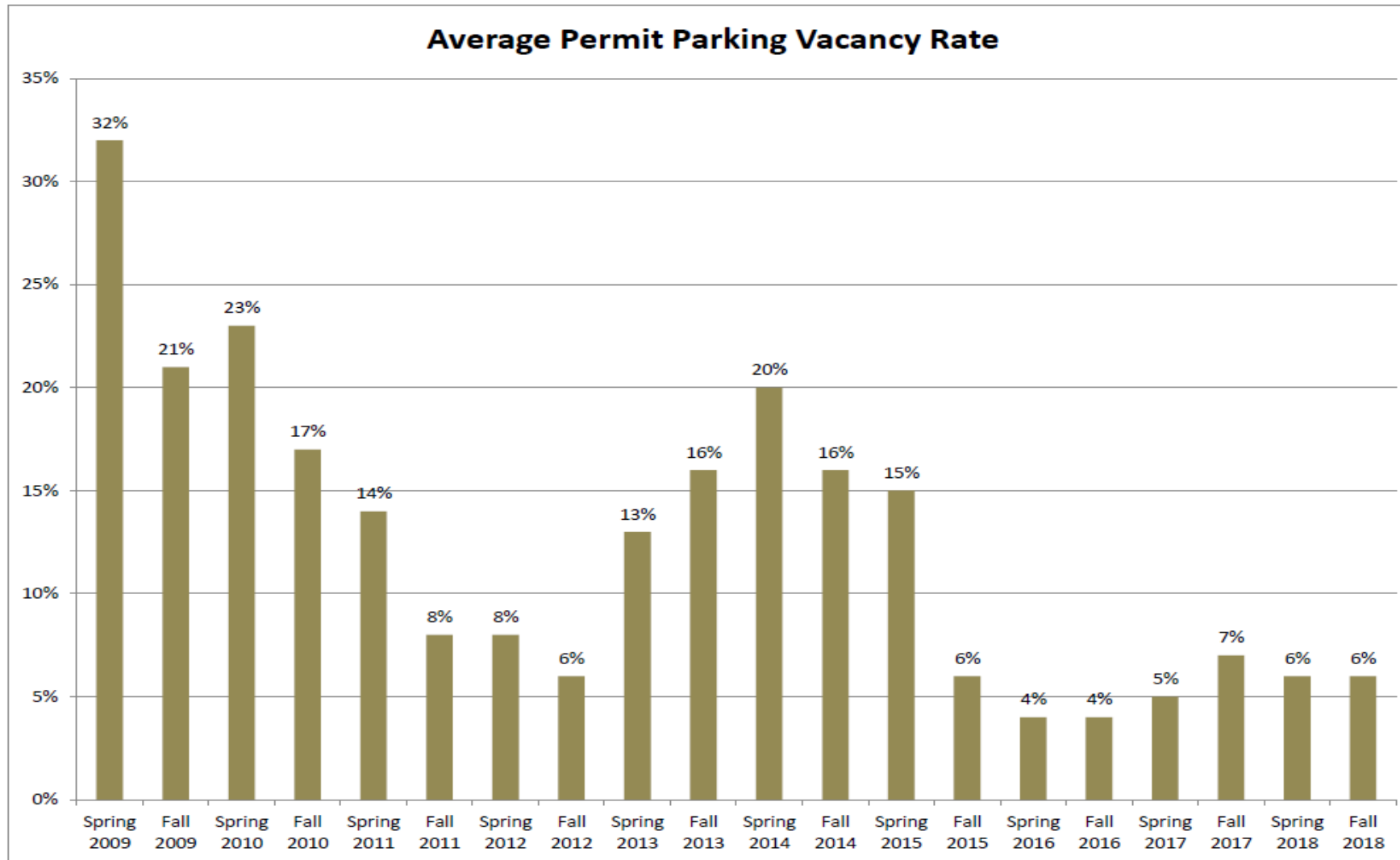
**2006** - CU Anschutz Campus is a state-of-the-art medical center, globally recognized for its research, teaching and clinical programs in medicine, dentistry, pharmacy, public health, physical therapy and nursing. The Anschutz Medical Campus is also the home to University of Colorado Hospital and Children's Hospital Colorado.

There are now thousands of events held on campus each year to bring awareness and education to each of these fields.

Parking and transportation must adjust and grow to accommodate the visitors, guests, research participants, patients, employees and students who come to the campus.

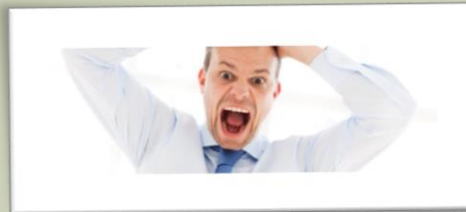


# IMPACT TO PARKING RESOURCES



# PARKING AVAILABILITY DECREASES

Customers are having to  
search the campus for  
available parking.



# SOLUTIONS

## Creative Solutions

- We began taking a deeper look at each of our existing parking lots to find ways to increase the parking capacity. There were several consistencies we were able to pinpoint.
  - Standardize all spaces to 8 ½ foot width
  - Standardize drive lanes
  - Eliminate unnecessary hashed areas within the lot
  - Eliminate old landscape areas that are no longer used
  - Remove vacant islands within the lots



# Results – Frisco Before

- Identify areas that can possibly be modified to create additional parking.



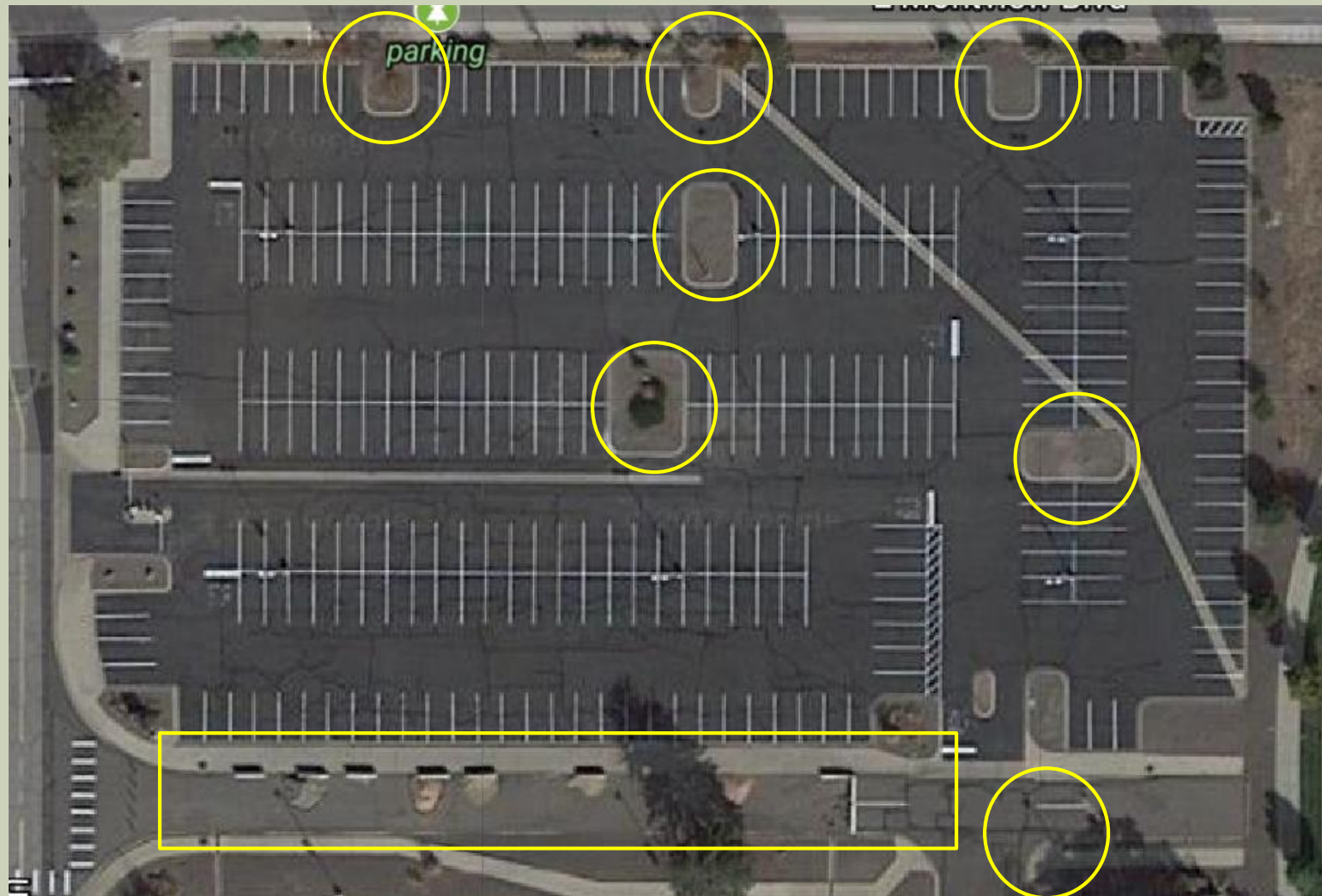
# Results – Frisco After

- Removed islands and shifted rows
- Net gain of 18 spaces
- NEW TOTAL 363 SPACES



# Results – Leadville Before

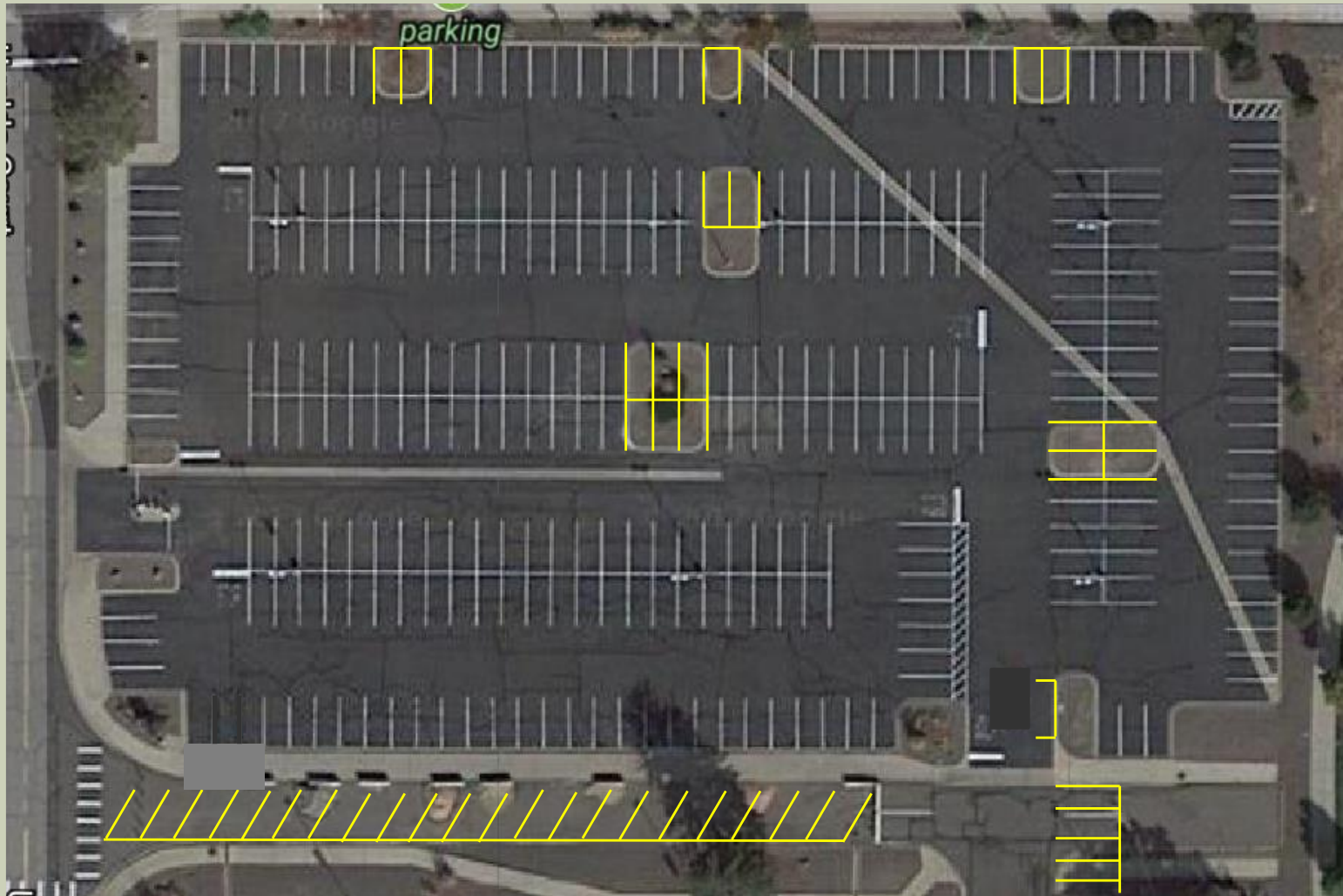
- Identify areas that can possibly be modified to create additional parking



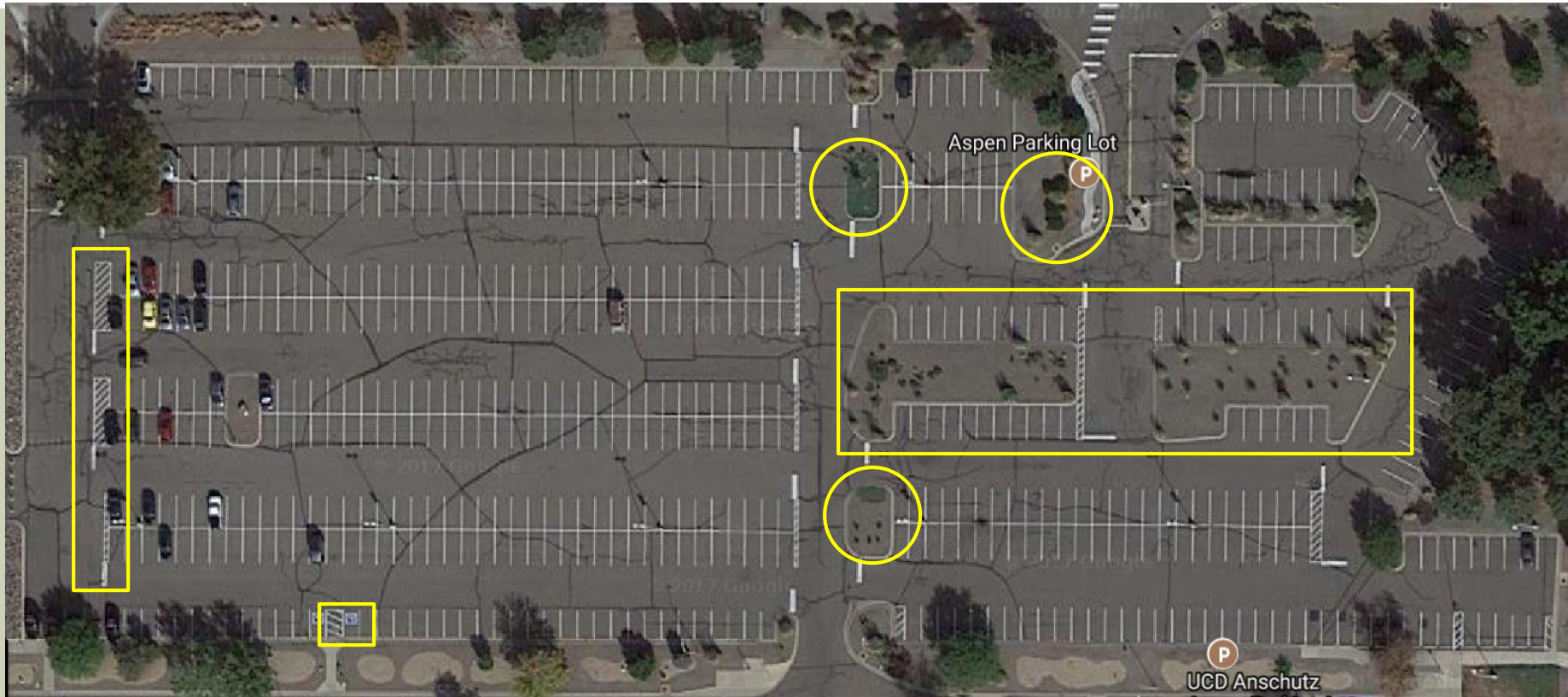


# Results – Leadville After

- Removed islands
- Added 21 angled spaces in an unused area
- Added spaces to the southeast section
- Net gain of 41 spaces
- **NEW TOTAL 335 SPACES**



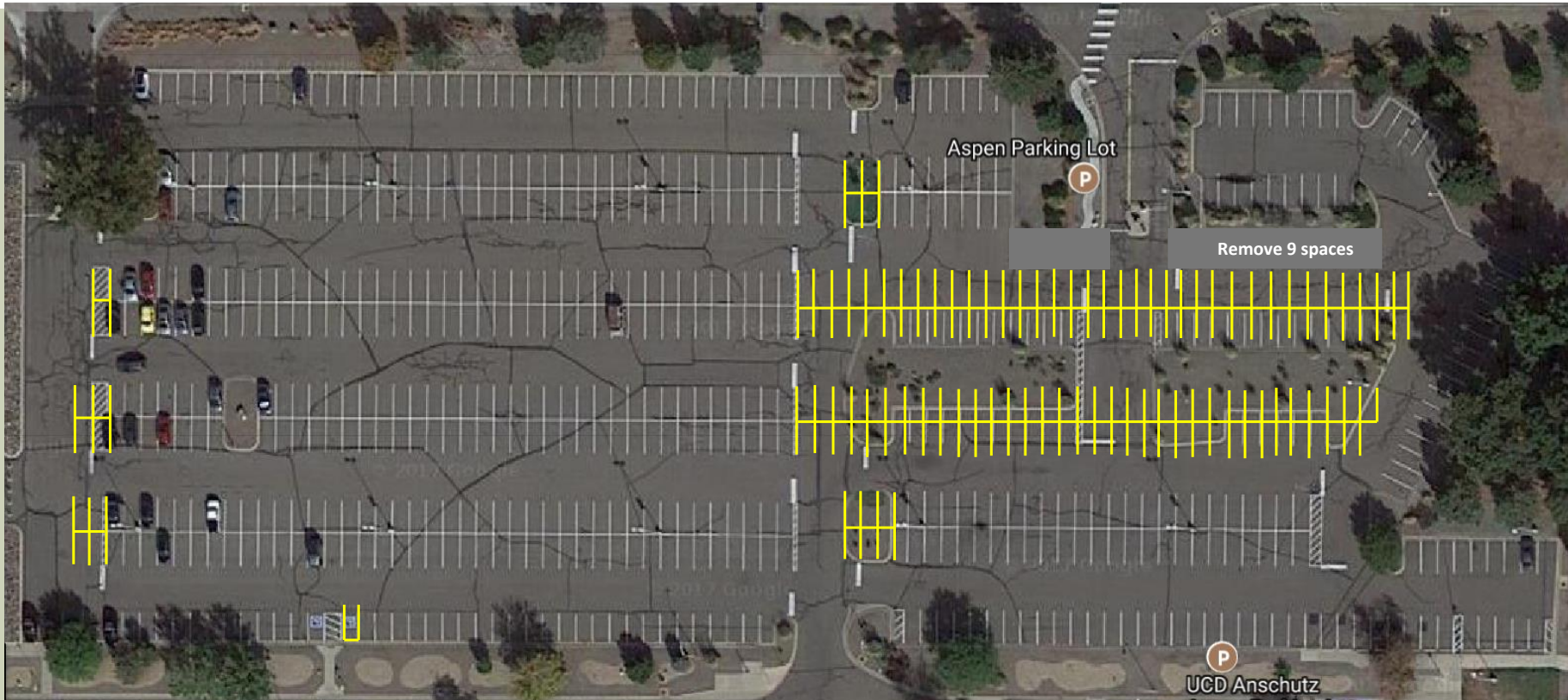
# Results – Aspen Before



- Identify areas that can possibly be modified to create additional parking



# Results – Aspen After



- ADDED SPACES TO THE END OF ROWS WHERE THERE ARE WIDE LANES
- REMOVED LARGE ISLANDS ON THE WEST SECTION
- TOTAL NET GAIN OF 109 SPACES.
- TOTAL CURRENT SPACES IN ASPEN 721



# Overall Results

- Economical solutions to provide relief on the existing parking demand on campus.
- The average cost for surface parking space is approximately \$3,000 per space
- In total 297 spaces were created in existing parking lots on campus for less than \$1000 per space



# Current Expansion Projects



# ALTERNATIVE TRANSPORTATION

The goal is to provide economical and manageable options for employees and visitors to get to campus.

- Intercampus Shuttle
- Discounted Carpool Program
- Employee Eco Pass Program
- Campus Circulator System
- Zip Car
- Car2go





# Rail Shuttle Project

- Regional Transportation District (RTD) planned the opening of the R Line trains in the Fall of 2016.
- In anticipation of the R Line the University applied to Denver Regional Council of Governments (DRCOG) Transportation Improvement Program (TIP) for a federal grant to support a shuttle service from the R Line at the new Fitzsimons Rail Station into the Anschutz Medical Campus. In developing the project there were several considerations.
  - Identify risk of the project
  - Prepare for any surprises
  - Define the specific scope, budget and schedule
  - Present and gain University and campus support of the project
  - Partnership with the City of Aurora and RTD

# RAIL SHUTTLE APPROVED

- The University's project was selected and awarded \$1.5 million to support the startup and operational costs of the shuttle service.
- The University of Colorado Hospital and Children's Hospital Colorado partnered with the University to share the ongoing operational costs of the shuttle service to key locations on the Anschutz Medical Campus.



- The Rail Shuttle has been in service since late February 2017 when the R Line actually began running.
- Ridership on the shuttle has surpassed all the initial forecasting and expectations.

# CONCLUSION

- Providing economical parking and transportation solutions for faculty, staff and students.
- Integrating supplemental programs to support the goals.
- Advantages of developing a comprehensive parking and transportation plan for the campus by partnering with the surrounding community and businesses.
- Advance preparation for future needs.





# QUESTIONS?

